

Halmatic LIMITED

Commercial Brokerage

SAXON WHARF, LOWER YORK STREET, NORTHAM,
SOUTHAMPTON, SO14 5QF, ENGLAND

Telephone: +44 (0) 1703 337477

Facsimile: +44 (0) 1703 337478

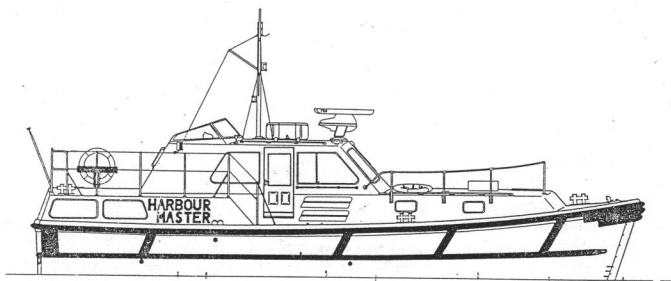
Telex: 47464 HALMAT G



A MEMBER OF
HUNTING
P.L.C.

HCB/SPEC 3140/Issue 1

PRELIMINARY SPECIFICATION



MARCHWOOD

Nelson 42 Aft Cabin Commercial Service launch

- BUILT** : Nelson 42 T.S.D.Y. designed by T.T. Boat Designs and moulded/fitted-out by Halmatic Limited of Havant England in 1980.
GRP Hull, Deck and Superstructure.
Lloyds Hull moulding release certificate.
Hull : Navy Blue Deck : Blue treadmaster. Superstructure: White
- LOA** : 40'-4" / 12.29m
- BEAM** : 11'-8" / 3.35m
- DRAUGHT** : 3'-3" / 0.99m
- WEIGHT** : 13 tonnes
- SPEED** : 14 knots cruise/16-17 knots sprint.

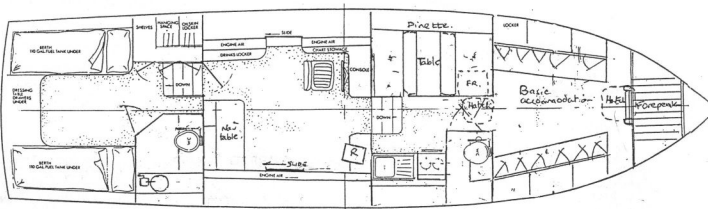


- ENGINES** :
- Twin Ford Sabre 212hp turbocharged Diesel Engines rated at 190hp each at 2400 RPM.
 - Engines stripped and re-built in 1994/5 by Hunting Marine Services.
 - Manual bilge pumping for aft and E/R compartments from wheelhouse
 - Manual bilge pump to forward compartment
 - 1 Rule electric bilge pump in engine room
 - Automatic firefighting system in engine space with remote in wheelhouse
 - Rod steering to lower and upper steering stations.
- Fuel consumption** : Cruising 17.8 galls/80 Lts approx.
Continuous 23 galls/105 Lts approx
- Range** : 225 +/- n.miles approx

- FUEL TANKS** :
- 2 GRP fuel tanks each 150 gallons/ 680 lts capacity
 - 1 stainless steel fresh water tank 30 galls/136 lts capacity
 - Manual fresh water system

- ELECTRICS** :
- 24 Volt DC
 - 4 x 6 Volt Exide Engine/General service starting batteries (P)
 - 4 x 6 Volt Exide Engine/General (S)
 - Parallel switching providing engine start from either/both banks of batteries
 - Electrics switched and charged by main engine alternators
 - 3 x Wynn screen wipers c/w variable speed controls

- ACCOMMODATION**
- Sleeps 2 in 2 upholstered single berths in aft double cabin with hinging drop leaf centreline table. Marine toilet compartments forward and aft, with small galley c/w Flavel B700 cooker with oven and grill, sink and dinette seating to Port (excluding table). Spacious wheelhouse (E/R under) with sliding access doors to port & starboard & chart table aft with stowage under. Bostrom A100 damped Coxswains seat, Radar opposite at Nav. station to starboard. Basic forward accommodation comprising of stowage cupboards and cave lockers under.





Works Acceptance Certificate

This is to certify

that the FRP Moulding Facilities at

Halmatic Ltd.
Brookside Road
Havant
Hampshire PO9 1JP

have been inspected by a Surveyor to Lloyd's Register and are considered acceptable for the moulding of FRP Yachts and Small Craft under the supervision of LR's Surveyors.

The Workshops are under continuous routine inspection by Lloyd's Register Surveyors to ensure compliance with LR's Rules and Regulations in respect of workmanship, materials and the Documented Quality Control System which is subject to Annual Audit by LR.

**Lloyd's
Register**

Certificate Number SOU 710255

Date of issue 2nd September 1991

Lloyd's Register of Shipping
71 Fenchurch Street, London EC3M 4BS


Deputy Secretary
Lloyd's Register

Halmatic Commercial Craft



Halmatic

SETTING THE WORLD STANDARD

Halmatic pilot boats serving shipping worldwide



Halmatic's 8-33m range of commercial craft is unsurpassed in extent and variety.

Decades of experience in building pilot launches, harbour craft, search and rescue vessels, fishing, and special purpose boats have made Halmatic's name synonymous with quality, strength, durability and seakeeping performance.



Efficient use of space



PILOTAGE



the pilot boat market for decades. Now with a versatile range spanning 34, 35, 38, 40, 42, 44, 45, 49 and 48/50ft, up to the spacious, powerful 60ft (18m), there is an unrivalled choice.

From the smallest port to the busiest (with over 100 ship movements per day), or where pilots transfer in ocean conditions, Halmatic has a boat to meet every need.



Nelson 48/50



Halmatic 48m

Pilot launches, by necessity, need to withstand 'controlled' collisions when transferring pilots.

Additionally, they need to maintain operational speed and to be comfortable in almost any weather, safe in boarding situations, and to display effortless handling and reliability.

Using practical, innovative design experience, Halmatic has led

GENERAL SERVICE/PATROL



Nelson 42 Mk II

By bringing together proven hull forms with design expertise, Halmatic can offer effective solutions to specific operational requirements to meet any



Talisman 49

To meet general service and patrol functions in harbours and coastal waters Halmatic has developed an extensive range of configurations for rugged, practical working craft.

Typical applications include: police, Customs, harbour authorities, river patrol, and resource protection agencies.

need - such as the mother/daughter craft for fisheries patrol duties where safe launching and recovery of the daughter boat is vital. (See far left.)



With hull designs that are bywords in the industry, such as Nelson, Arun and Talsman, Halmatic counts among its customers the foremost pilotage authorities, coastguards, police, navies, defence ministries, harbour boards and fisheries protection agencies across the world.

Halmatic's policy of building to the highest standards of quality and offering such an extensive variety of layout options ensures that customers always take delivery of boats which suit their exact requirements, whatever their purpose.

While building primarily in FRC (fibre reinforced composites), Halmatic also

Crew comfort priority



Typical well equipped galley

offers construction in aluminium and steel.

In addition to building and outfitting to completion, Halmatic is able to supply part assembly mouldings for customers who prefer to make their own outfitting arrangements.

At the forefront of boatbuilding technology for over 40 years, Halmatic operates from Saxon Wharf, a purpose-built, 15-acre marine

SEARCH & RESCUE



Working closely with the Royal National Lifeboat Institution and other leading SAR authorities around the world, Halmatic's record in this demanding market is unsurpassed.

Factors such as safety for crew and survivors, reliability of boats and their systems, and strength of construction are paramount when building boats to save lives at sea.

Halmatic 18m



Much depends on experience and Halmatic's is unmatched when it comes to self-righting lifeboats and rigid inflatable SAR boats. Drawing on such experience, Halmatic is able to meet exacting specifications for special applications - such as the state-of-the-art extended Arun-type 18m salvage/rescue vessel ALSTER. (See above left and right.)



Arun lifeboat

FISHING

The recently designed Halfish series of displacement fishing boats are built at 24, 37, 46 and 60ft lengths.

Each can be supplied as fully fitted-out craft with many configurations, or as part assemblies (basic hull/superstructure), or in 'kit form' at varying stages of completion.

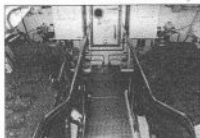
All designs are proven in service as economical, efficient, sturdy and tough boats.



base in Southampton, UK, equipped with the most modern construction and repair facilities in Europe.

In dedicated, controlled-environment fabrication halls and workshops, Halmatic builds commercial craft, RIBs and a wide range of fast patrol boats up to 33m to Lloyds Certification or the equivalent standard in the customer's country of origin.

Constantly developing new, more advanced designs,



Good access to machinery

Halmatic has built its reputation on two simple but vital pledges - boats of the highest quality and customer satisfaction.



Structures to major Classification rules

As a member of the renowned UK Hunting PLC group of companies, Halmatic enjoys the financial strength and stability which customers worldwide find so reassuring.

SPECIAL PURPOSE



When a customer has a special-purpose application that requires conceptual design with a high degree of technical capability, Halmatic has consistently found the solution. Typical recent examples, where the installation of highly complex

equipment was required, are: a sophisticated fisheries research shellfish suction dredger; diving support boats equipped for 16 divers; survey boats with high transit speed and longer survey speed capabilities; and powerful boats for mooring VLCCs.



15m fisheries research



Halmatic

Configuration options



9 metre Survey



Nelson 40 Mk I Pilot



Talisman 49 Passenger



9.9 metre Mooring



Nelson 42 Mk II General Service/Patrol



Talisman 49 Pilot



Nelson 35 General Service/Patrol



Nelson 42 Mk II Pilot (Super Pilot)



Talisman 49 General Service/Patrol



Nelson 35 Pilot



Nelson 44 Pilot



Nelson 48/50 Pilot/Service



H38 Lifeboat



Nelson 44 Pilot



Nelson 48/50 Pilot



H1200 Diving/Survey



Nelson 44 General Service/Patrol



Nelson 48/50 Pilot (Aluminium)



Nelson 40 Mk I Pilot



Talisman 47 Diving/Survey



Nelson 48/50 Pilot



16 metre General Service/Patrol



18 metre Pilot

Halmatic Commercial Hulls: principal data

FULL DISPLACEMENT

Type	Length(m)	Beam(m)	Speed(Kts)	Disp.(tonnes)
Halfish 24	7.3	2.9	8	4
Halfish 37	11.4	4.5	8	20
Halmatic 1200	12.0	4.26	14	15
Halfish 46	13.9	5.2	8	45
Halfish 60	18.0	6.4	8	100

SEMI DISPLACEMENT

Halmatic 9.0	9.0	3.8	20	6.5
Halmatic 9.9	9.9	3.8	20	7
Halmatic 34	10.36	3.3	25	7
Nelson 35	10.62	3.5	25	8
Halmatic 38	11.85	3.81	18	12
Nelson 40 Mk I	12.29	3.35	25	11
Nelson 42 Mk II	12.7	3.96	26	12.5
Nelson 44	13.11	3.96	25	14.5
Talisman 45	13.63	4.65	25	15
Talisman 49	14.81	4.65	26	20
Nelson 48/50	15.00	4.17	26	19
Arun Type 52/54	15.85	5.18	25	28
Extd Arun Type 60	18.00	5.18	26	35
Hargrave 64	19.56	4.98	28	35
Hargrave 85	25.91	5.87	20	60

Specifications are subject to changes in line with Halmatic's ongoing programme of refinement and advancement. Halmatic craft are built under licence in many countries across the world. Halmatic craft are built to UK MSA, Lloyds, ABS, DnV and other equivalent international classification standards.



Halmatic

Halmatic Limited, Saxon Wharf, Lower York Street, Northam, Southampton SO14 5QF, UK
Tel: +44 (0)703 337477, Fax: +44 (0)703 337478

